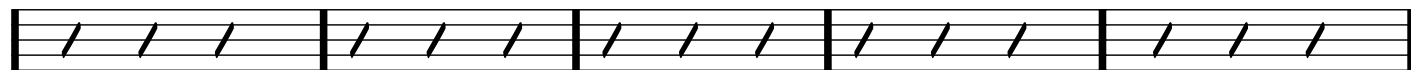
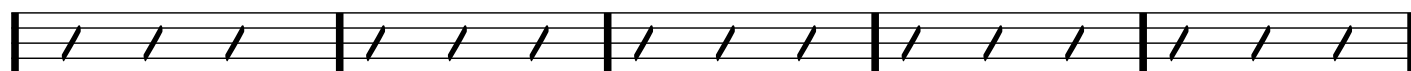
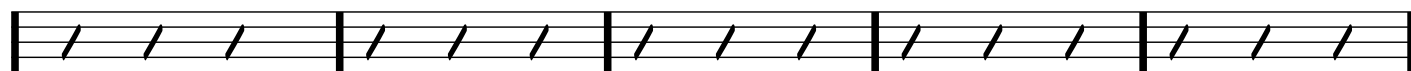


(MED. SAZZ  
WALTZ)**BLUESETTE**

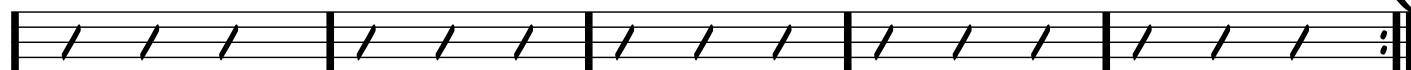
-JEAN THIELEMANS/

BORMAN GIMBEL

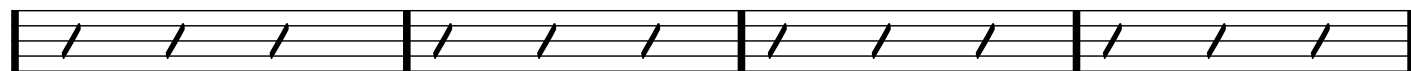
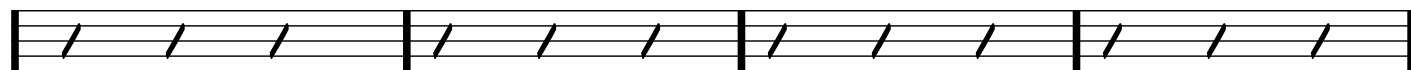
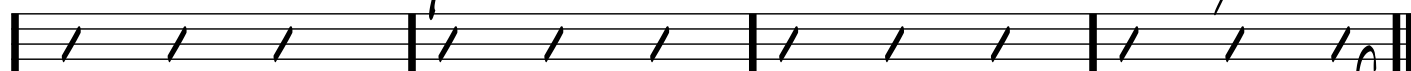
-CHANGES-

(B $\flat$  MAJORB $\flat$ <sup>6</sup>A $\flat$ D $\flat$ G $\flat$ -7C $\flat$ F $\flat$ -7B $\flat$ 7E $\flat$ <sup>6</sup>E $\flat$ -7A $\flat$ 7D $\flat$ <sup>6</sup>D $\flat$ -7G $\flat$ 7C $\flat$ <sup>6</sup>C $\flat$ -7F $\flat$ 

1.

D $\flat$ -7D $\flat$ 7C $\flat$ -7F $\flat$ 

2.

D $\flat$ -7G $\flat$ C $\flat$ -7F $\flat$ B $\flat$ <sup>6</sup>G $\flat$ -7C $\flat$ -7F $\flat$ 

fine